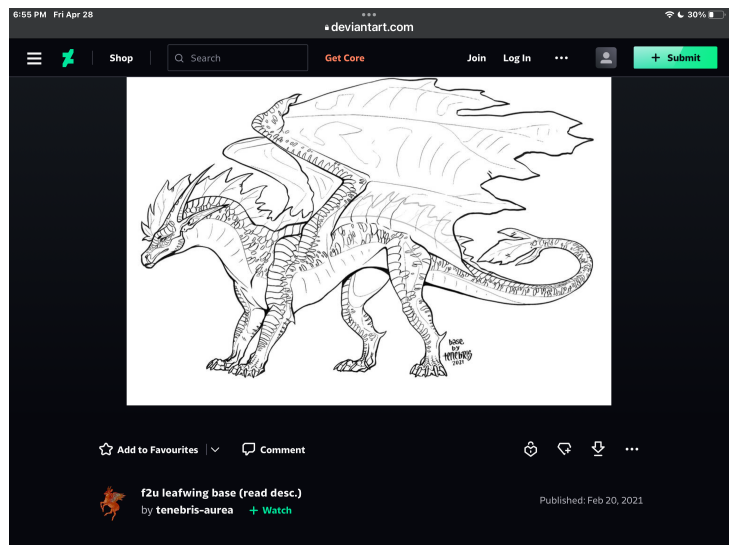
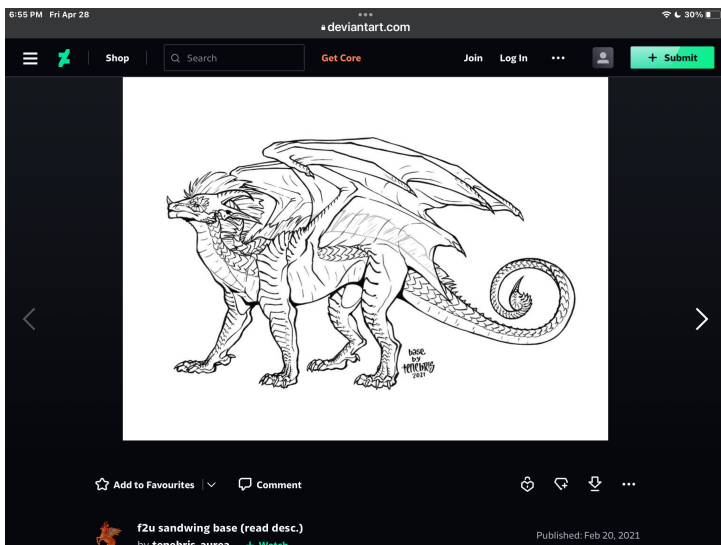


If you aren't familiar already, jcb45rocks posts wings of Fire art he "drew" and other things of such. He likes to join in on Remixes, even some I have joined. For a while now, I've noticed his art was fishy, specifically their wof art: They were all different styles and looked traced. Now, don't get me wrong, I have plenty of different styles, but his were way too obviously recognizable. I just had to find the artists that I knew were most similar.

Below I will show the art of the original artists and his own:

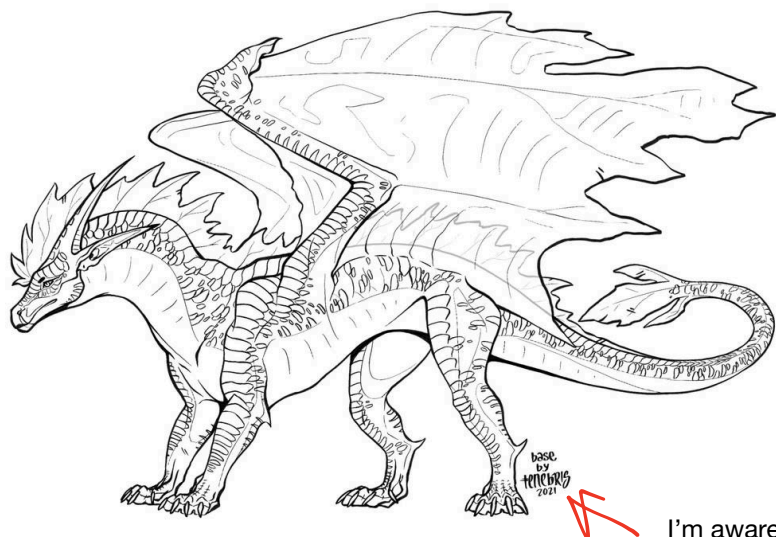
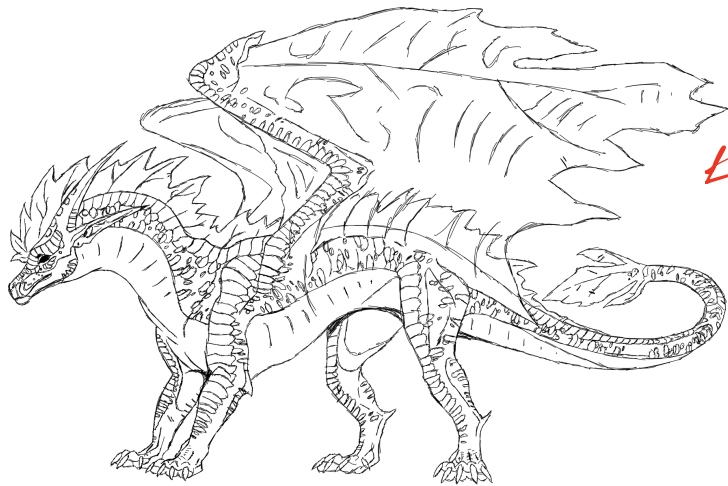
He seems like a nice guy, don't get me wrong, I don't want people to think that I don't. He also makes his own art, which is actually good! I just don't like when people trace. It isn't right, especially when you don't credit the original artist and claiming it is your own.



one  
netraced  
original  
art  
+  
artist

Name: Unknown

All (I believe)



He has traced.

I do not know all of the artists, the ones I mention are the only ones I could find and the only ones I knew.

I feel the differences are very clear:

- | His                                                                                                                                               | Org                                                                      |
|---------------------------------------------------------------------------------------------------------------------------------------------------|--------------------------------------------------------------------------|
| • Lineart is patchy, and stayed to almost complete detail.                                                                                        | • Finer Lineart                                                          |
| • Where opacity is in the org drawing, is still in pen. Not saying he should've, but there is a highlighter available to make the similar effect. | • Opacity in areas like the wings and sail.                              |
| • No sig, not even credit                                                                                                                         | • Signature is there, formally and clear with the year and who it is by. |
|                                                                                                                                                   | • It is over-all neat and obviously the original                         |

I'm aware it is a base, as it is stated in the signature.

It's the fact he traced it. The base is meant for him to color and make his oc. Not completely steal and claim it is his own.

Another is with his has completely blacked out eyes, and the original has a pupil.

I know there are more, but you can probably figure them out.

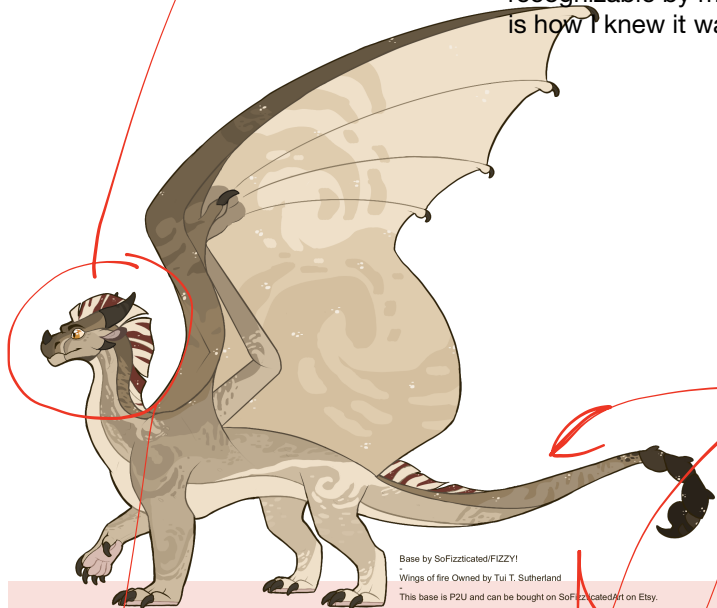
\* The trace is almost "line for line". Despite some details not being added, it is definitely traced. It is so obvious when it is put next to the real art.



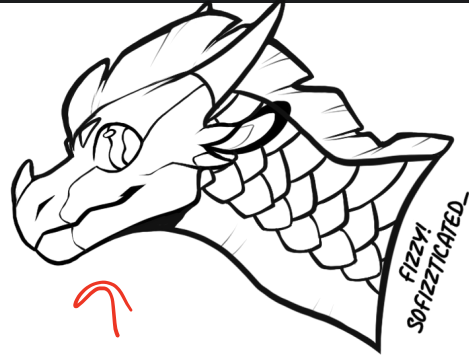
I need more



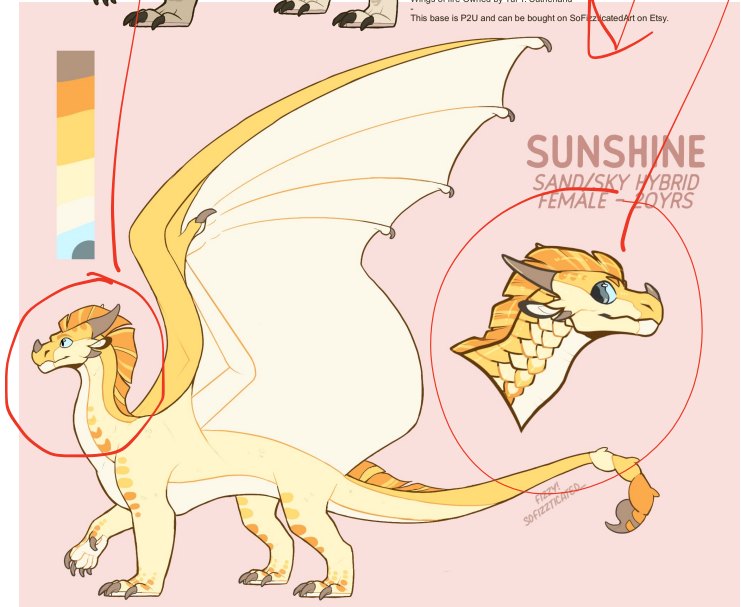
This person is probably recognizable by most, which is how I knew it was traced.



Base by SoFizzicated/FIZZY!  
Wings of fire Owned by Tui T. Sutherland  
This base is P2U and can be bought on SoFizzicatedArt on Etsy.

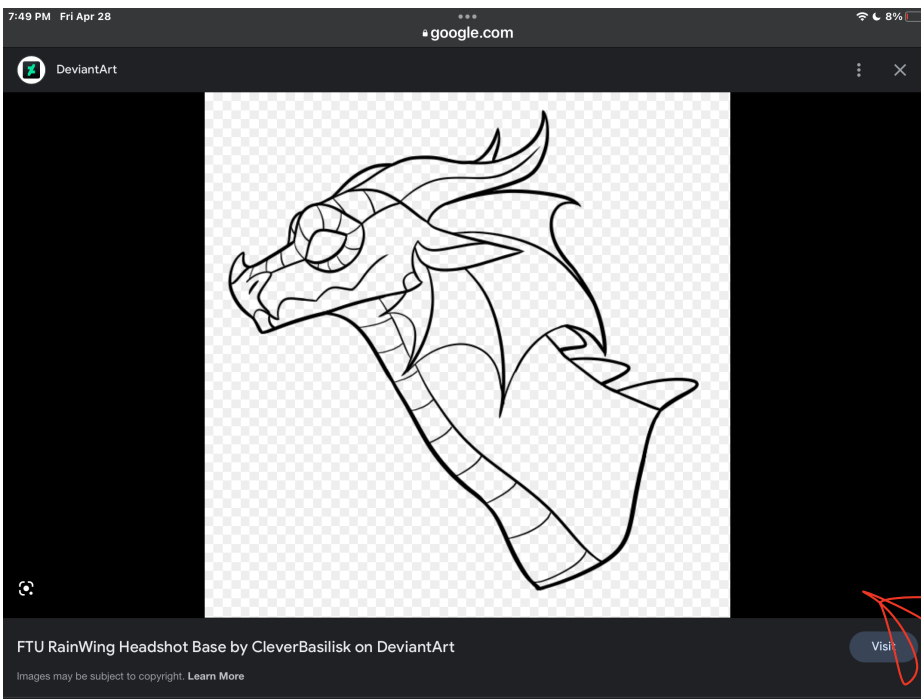


These are some colored bases I found. The original base is by Fizzy! on DevianArt. I do not know this person's pronouns, but they have- from what I know- two different styles. Which I show above and left of this paragraph. In Jcb's art, he only traced head to half neck down. It seems from this collage of his different traced art, he has done the same with Hive, Ice, Night, Sea, Rain, and the Sand Wing tribes by the same person. All of which have slight changes and, once looking at the actual art, are very noticeable.



It seemed to me that a lot of people weren't aware of this and thought his art was his. I did my best to find the artists, but only three I could find with the art. I know one of his friends traced another artist, which I was not able to find. I am sorry to the artists that I was not able to identify. Tracing is wrong and shouldn't be done. You can be inspired by their art, but stealing their art completely and saying it is yours isn't right.

I was able to find another artist he traced.



Here is another he colored and possibly traced.

It's the Rain/Hive Wing hybrid he made. It isn't as obvious at first, but like I said with the others, compared it is obvious. He clearly added stuff to it. Not sure if it was to make it look more like it was his own and wouldn't be able to be seen as traced or it was just made to be an oc like any other. With a lot of these, they don't have names or they are decided by his following but never end up getting the names. I'm sure some do, though.

by this

Some person